

LEGEND

ABBREVIATIONS

(D)

= DEED MEASUREMENT

(FDDT)

= FLORIDA DEPARTMENT OF TRANSPORTATION MEASUREMENT

(LD)

= LEGAL DESCRIPTION MEASUREMENT

(M)

= FIELD MEASUREMENT

(M&D)

= FIELD MEASUREMENT

(P&S)

= POST, BUCKLEY, SHOE, & JERNIGAN MEASUREMENT

(XXXX)

= POINT NUMBER ASSIGNED TO A COORDINATE PAIR

AT#

= PHOTO IDENTIFIABLE AERIAL TARGET NUMBER

AZ. MK.

= AZIMUTH MARK

CB

= CHORD BEARING

CCR#

= CERTIFIED CORNER RECORD NUMBER

CD

= CHORD DISTANCE

CM

= CONCRETE MONUMENT

CMP

= CORRUGATED METAL PIPE

CP

= CHECK POINT - PHOTO IDENTIFIABLE

CR

= COUNTY ROAD

D

= DELTA

DB

= DEED BOOK

FND

= FOUND

FP&L

= FLORIDA POWER AND LIGHT

IP&C

= IRON PIPE & CAP

IR&C

= IRON ROD & CAP

L

= ARC LENGTH

LB

= LAND SURVEYING BUSINESS

NAVD 88

= NORTH AMERICAN VERTICAL DATUM OF 1988

ORB

= OFFICIAL RECORDS BOOK

PB

= PLAT BOOK

(P&S)

= MEASUREMENTS FROM POST, BUCKLEY, SHOE, & JERNIGAN

PG

= PAGE

POB

= POINT OF BEGINNING

POC

= POINT OF COMMENCEMENT

PRM

= PERMANENT REFERENCE MONUMENT

R

= RADIUS

RCP

= RIGHT-OF-WAY

RW

= REINFORCED CONCRETE PIPE

RTK

= REAL TIME KINETIC

TRAV.

= TRAVERSE

SYMBOLS

+

= AERIAL TARGET AS LABELED

—

= AERIAL UTILITY LINE

—

= CHAIN LINK FENCE (SIZE AS NOTED)

+

= CHECK POINT FOR AERIAL PHOTOGRAPHY

—

= CONCRETE UTILITY POLE

—

= ELECTRICAL JUNCTION BOX

—

= ELECTRICAL MANHOLE (FLORIDA POWER & LIGHT)

—

= ESTABLISHED GEODETIC CONTROL POINTS

—

= LIGHT POST

—

= MAIL BOX

—

= POLE ANCHOR

—

= GATE VALVE

—

= SANITARY MANHOLE

—

= SIGN

—

= UNDERGROUND UTILITY WITNESS POST

—

= UTILITY PEDESTAL

—

= WATER METER

—

= WATER VALVE

—

= WELL

—

= WOOD UTILITY POLE

—

= SET "X"X" CONCRETE MONUMENT WITH "X" ALUMINUM DISK STAMPED "MARTIN COUNTY SURVEY MARK 2012 GCY INC. LB 4108" AROUND MARTIN COUNTY SAILFISH LOGO

—

= FOUND CONCRETE MONUMENT (AS NOTED)

—

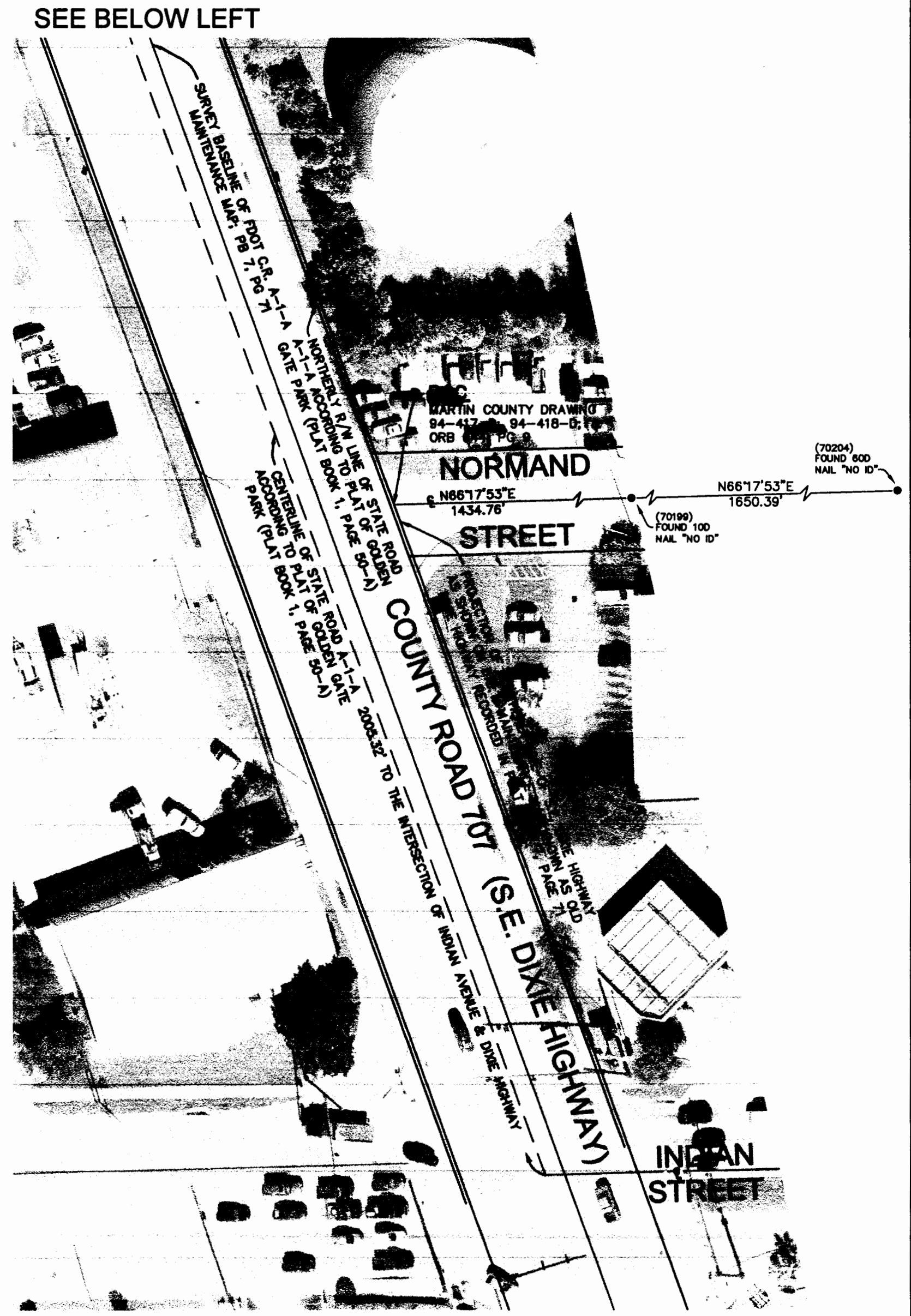
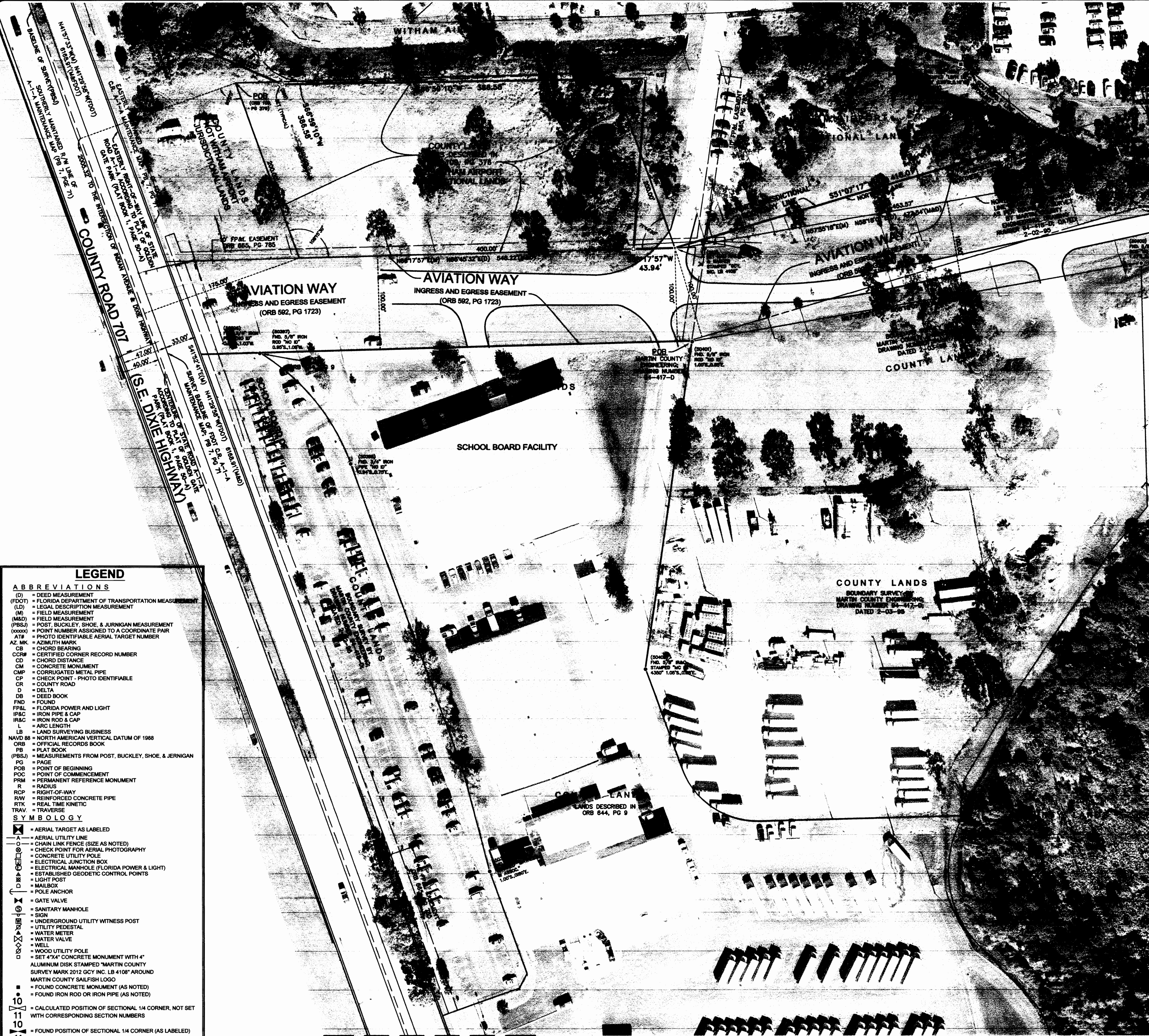
= FOUND IRON ROD OR IRON PIPE (AS NOTED)

—

= CALCULATED POSITION OF SECTIONAL 1/4 CORNER, NOT SET WITH CORRESPONDING SECTION NUMBERS

—

= FOUND POSITION OF SECTIONAL 1/4 CORNER (AS LABELED) WITH CORRESPONDING SECTION NUMBERS



G

C

Y

INCORPORATED

PROFESSIONAL SURVEYORS AND MAPPERS

CERTIFICATE OF AUTHORIZATION LB 4108

CORPORATE OFFICE

PO BOX 1468 • 1505 SW MARTIN HWY.

PALM CITY, FL 33691

(800) 386-1066

TALLAHASSEE OFFICE

1979 MARYLAND CIRCLE

TALLAHASSEE, FL 32303

(850) 536-6455

WITHAM AIRPORT JURISDICTIONAL BOUNDARY SURVEY FOR:

MARTIN COUNTY

MARTIN COUNTY, FLORIDA

Scale:

1"=50'

Date:

10/10/2012

Drawn By:

JHY

Checked By:

ACA

File & Drawing No:

11-1018-08

Sheet

15 of 18